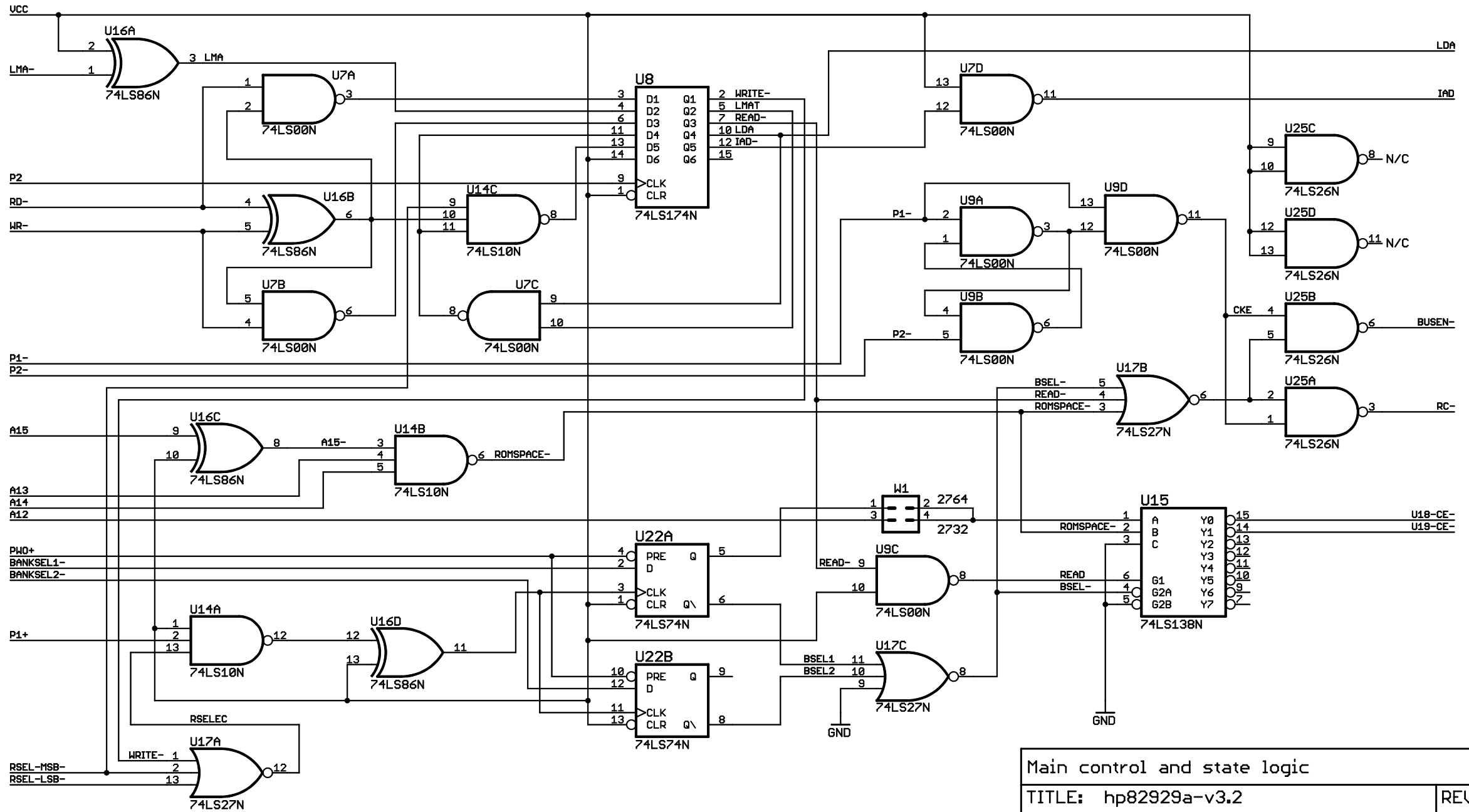
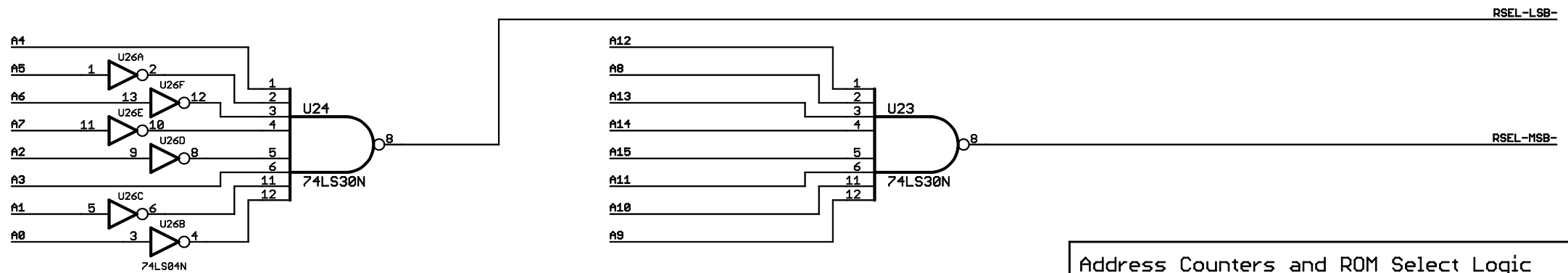
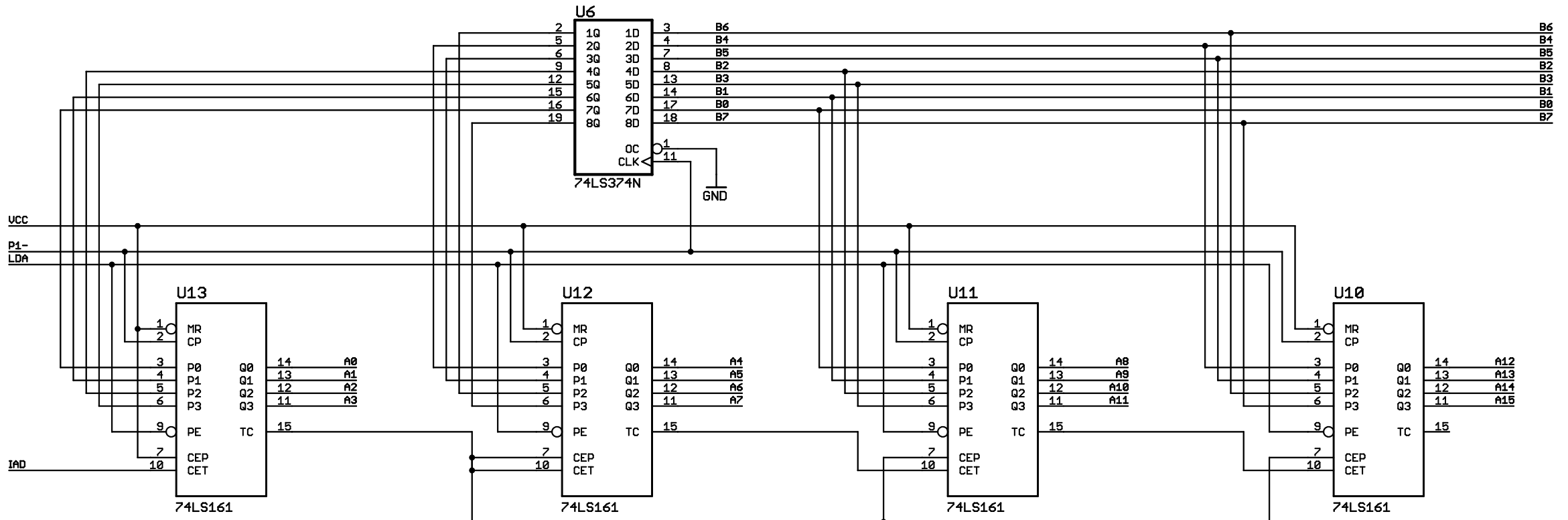


HP-85 Bus Interface & Drivers, PROMs/EPROMs

TITLE: hp82929a-v3.2	REV: 3.2
HP 82929A Programmable ROM Drawer	
Schematic by Jorge Amodio, Feb 2008	Sheet: 1/6

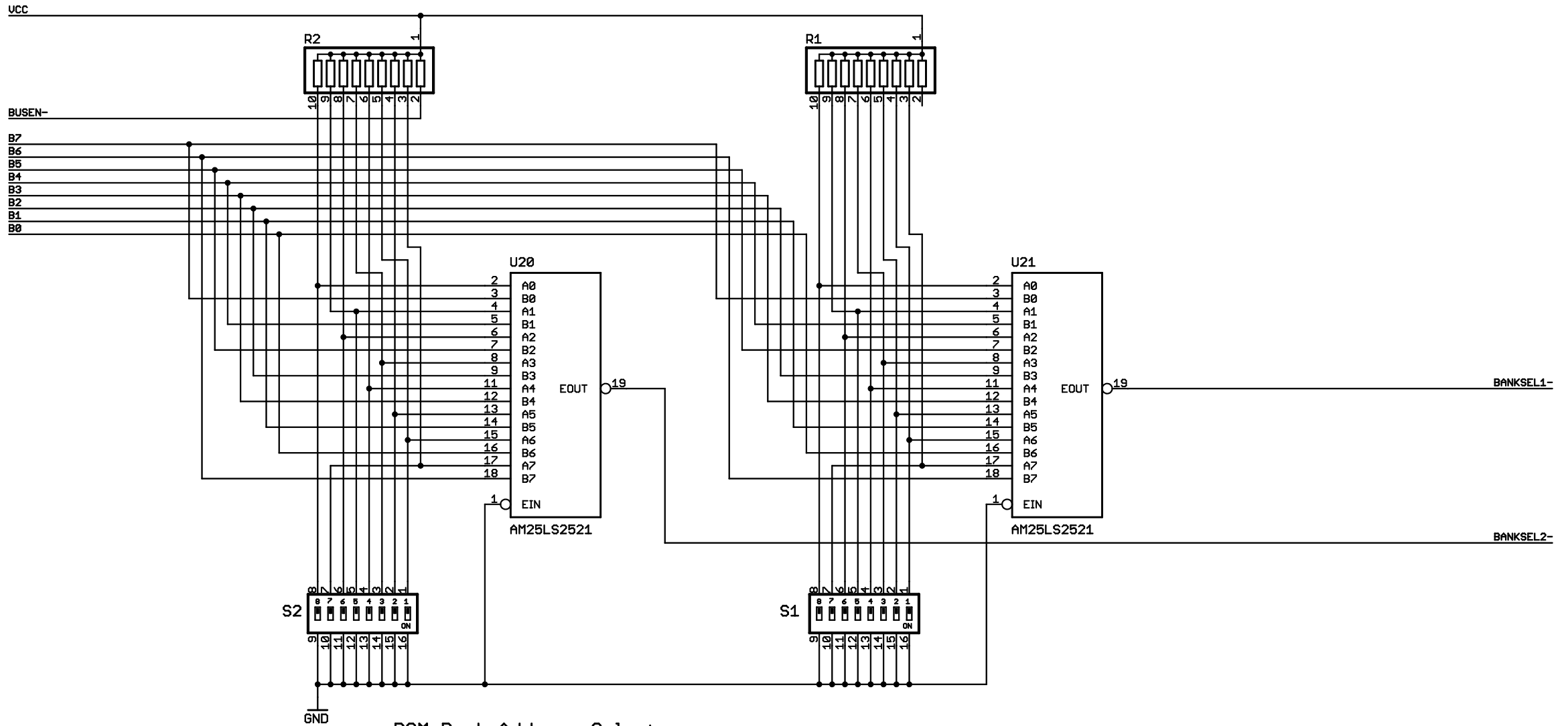


Main control and state logic		
TITLE: hp82929a-v3.2		REV: 3.2
HP 82929A Programmable ROM Drawer		
Schematic by Jorge Amodio, Feb 2008		Sheet: 2/6



ROM SELECT ADDRESS DECODE (0xFF18 - 177430)

Address Counters and ROM Select Logic		
TITLE: hp82929a-v3.2		REV: 3.2
HP 82929A Programmable ROM Drawer		3.2
Schematic by Jorge Amodio, Feb 2008		Sheet: 3/6

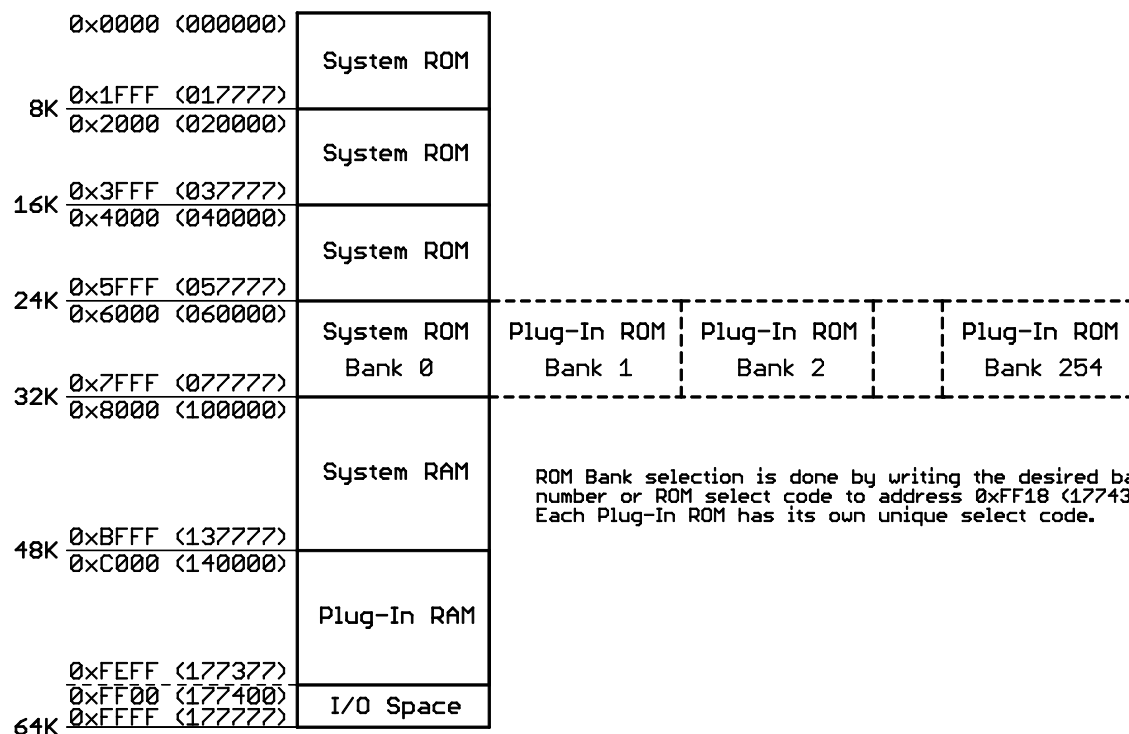


ROM Bank Address Select

- S1 selects ROM Bank for U18 and S2 for U19
- Valid Bank Addresses are 1 to 255
- Switch position 8 is MSb, 1 LSb
- Bank Address 0 will cause faulty operation since it is the System ROM Bank Address
- All ones will turn the switch logic off

ROM Bank Selection

TITLE: hp82929a-v3.2		REV: 3.2
HP 82929A Programmable ROM Drawer		
Schematic by Jorge Amodio, Feb 2008	Sheet: 4/6	



ROM Bank selection is done by writing the desired bank number or ROM select code to address 0xFF18 (177430). Each Plug-In ROM has its own unique select code.

HP-85 Plug-In ROM	Part Number	ROM Select Code		
		Dec	Hex	Oct
Mass Storage	00085-15001	208	0xD0	320
Plotter/Printer	00085-15002	240	0xF0	360
Input/Output	00085-15003	192	0xC0	300
Matrix	00085-15004	176	0xB0	260
Advanced Programming	00085-15005	232	0xE8	350
Assembler	00085-15007	40	0x28	050
Extended Mass Storage	00085-15013	207	0xCF	317
Advanced Programming	00085-15005	232	0xE8	350
HP-85 Service	00085-60952	224	0xE0	340
Program Development	98151A	8	0x08	010

HP-85 Memory Map

Schematic was recreated by reverse engineering an actual HP 82929A board by Jorge Amodio with cooperation from John Shadbolt and Everett Kaser. Latest version and related additional information is available on-line at <http://www.ljcv.net/projects/hp85/>
 Jorge Amodio <jorge@amodio.biz>, February 2008

HP-85 Memory Map & ROM Select Codes	
TITLE: hp82929a-v3.2 HP 82929A Programmable ROM Drawer	REV: 3.2
Schematic by Jorge Amodio, Feb 2008	Sheet: 6/6